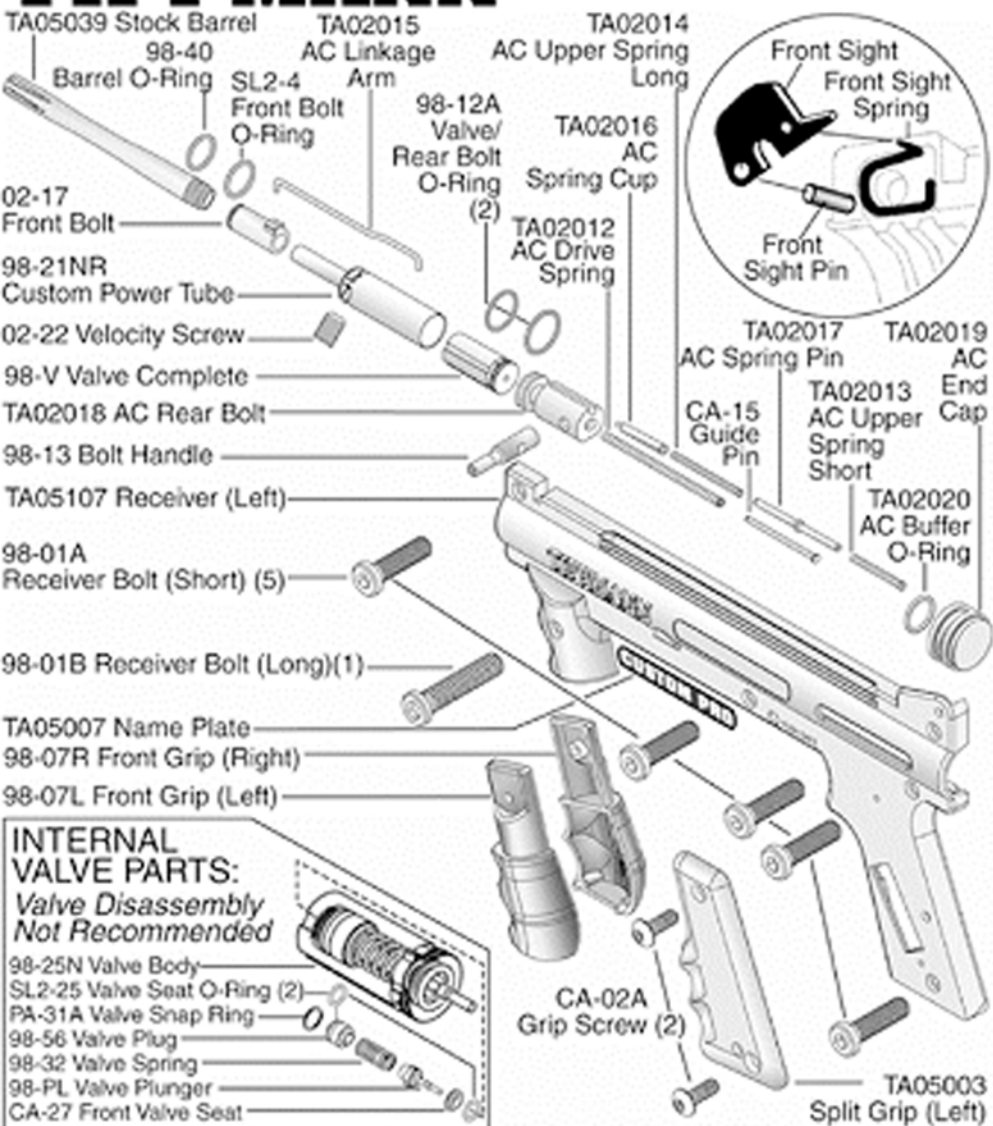


TIPPMANN 98 CUSTOM PRO BASIC PARTS LIST

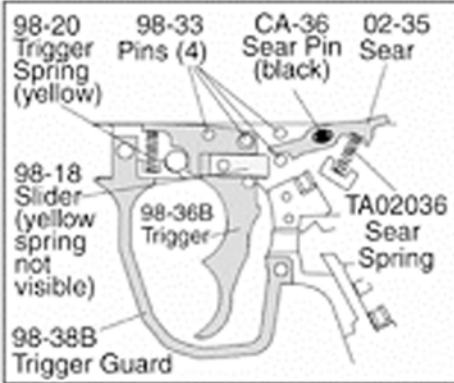


INTERNAL VALVE PARTS: Valve Disassembly Not Recommended



TRIGGER ASSEMBLY

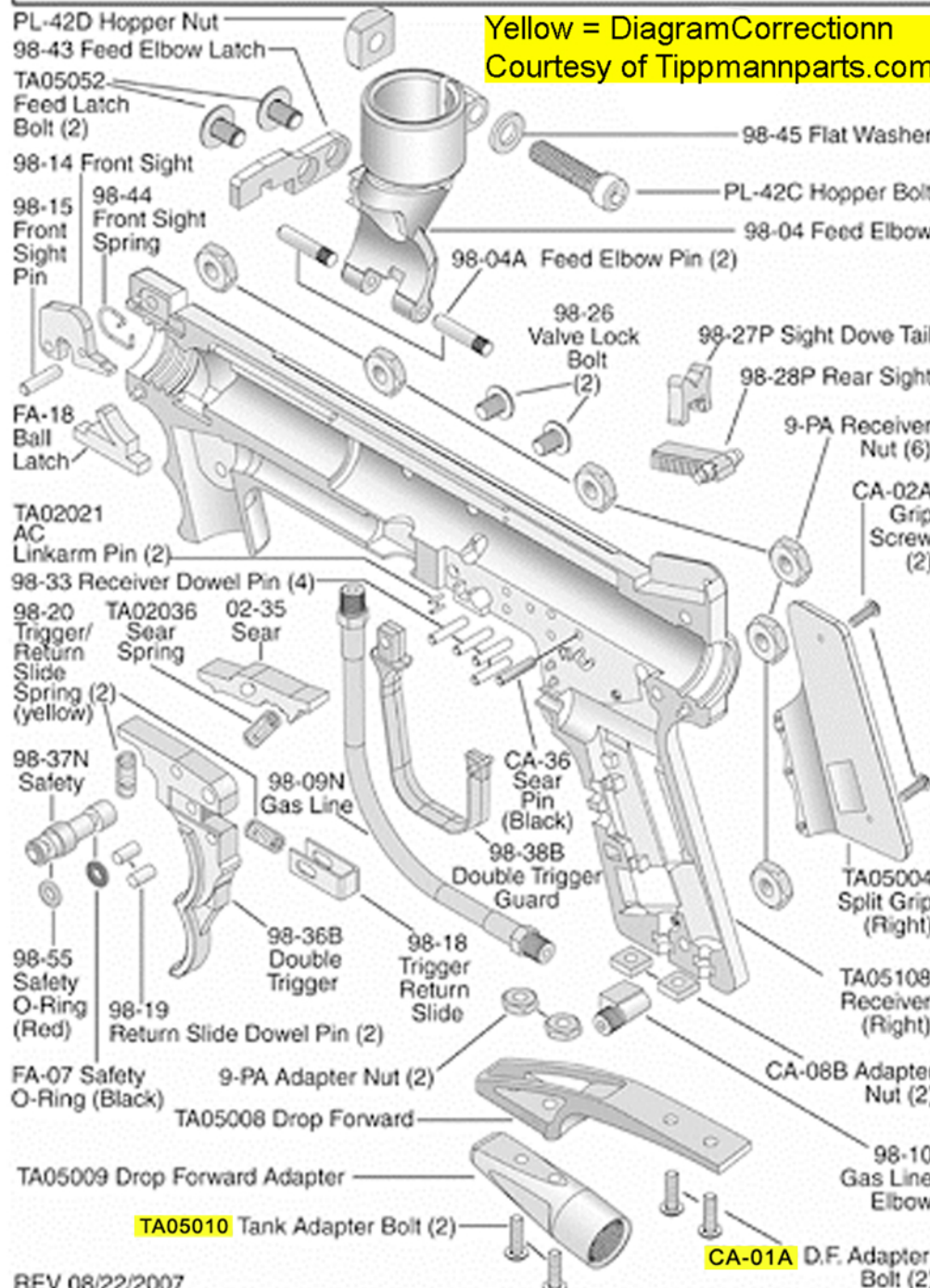
- 1) Place 4 pins and 1 black sear pin into locations as shown.
- 2) Then place the trigger and sear onto pins as shown.
- 3) Insert sear spring as shown.
- 4) Insert trigger spring (yellow) as shown.



WARNING

DO NOT DISASSEMBLE THIS MARKER WHILE IT IS PRESSURIZED WITH AIR. DO NOT PRESSURIZE A PARTIALLY ASSEMBLED MARKER.

Yellow = Diagram Correction
Courtesy of Tippmannparts.com



REV 08/22/2007

1-800-533-4831 • www.tippmann.com